

As an elected member of Toronto City Council, you become a custodian of a precious resource

Toronto is not just an artificial island composed of concrete, asphalt, glass and steel. Our city is an integral living part of the earth.



Our city contains extensive natural areas that support remarkable biodiversity, contribute to flood control and clean air, increase resiliency in the face of climate change, enrich our lifestyles and property values, and add to global sustainability.

Torontonians want to maintain a personal connection with nature for the mental and physical benefits it offers them and their children. They want to participate in community stewardship programs and contribute to the sustainability of our city and our planet for generations to come.



Our natural areas are under constant pressures from inappropriate uses, growing recreational demands, development, invasive species and climate change.

Fortunately, these areas are protected to a significant degree by policies, bylaws and strategies. But protective measures can only make a real difference if they are funded, implemented and enforced.

What will you do to preserve biodiversity and natural heritage in your ward and across Toronto?

- Do you agree that the City budget should direct funds annually to manage, restore and enhance Toronto's ESAs* to preserve their ecological integrity for future generations?
- Do you agree to support the implementation of Toronto's Pollinator Protection Strategy and Ravine Strategy, now and going forward?
- Do you agree to support the approval and eventual implementation of Toronto's Biodiversity Strategy?
- Do you agree to protect the ESAs and natural heritage areas in your ward* from encroachment and incompatible uses?

* Please see map and designations →

Our city's important natural areas are designated as:

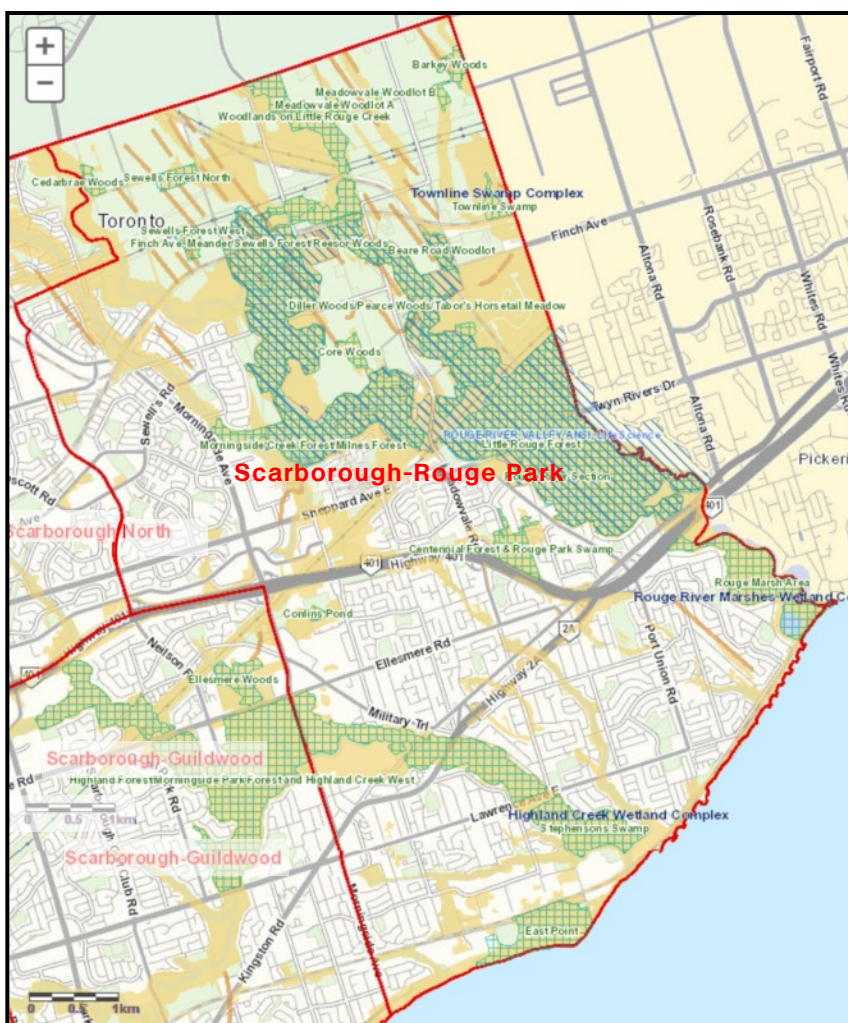
Natural Heritage System: habitats that diverse plants and animals need to live and thrive (e.g. meadows and forests that support pollinators, birds and mammals); this includes lands with the potential to be restored to natural habitat and become more interconnected.



Environmentally Significant Areas: ESAs are special spaces within Toronto's natural heritage system that support the greatest richness of plant and animal life and are most in need of protection. Some of these also have provincial ANSI (Area of Natural and Scientific Interest) designation.



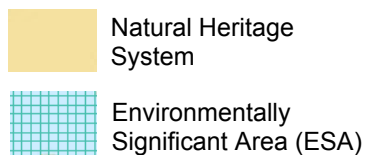
These are the designated natural areas in Ward 25: Scarborough-Rouge Park



Ward 25 includes 3 provincially significant wetlands (Rouge River Marshes, Highland Creek, Townline Swamp), 2 Earth Science ANSIs (Little Rouge Creek and Rouge River Section), and 1 Life Science ANSI (Rouge River Valley), 8 additional ESAs including Stephenson's Swamp and East Point 15 ESAs; half of Ward is ANSI

Natural heritage protection includes:

- Official Plan and zoning
- Ravine and Natural Feature Protection Bylaw and Parks Bylaw
- Toronto Ravine Strategy
- Pollinator Protection Strategy
- Biodiversity Strategy (draft)
- Provincial Policy Statement 2014



SOURCE: City of Toronto, Toronto Maps v2

For more information and links to key City documents, visit ProtectNatureTO.org