

Our city's important natural areas are designated as:

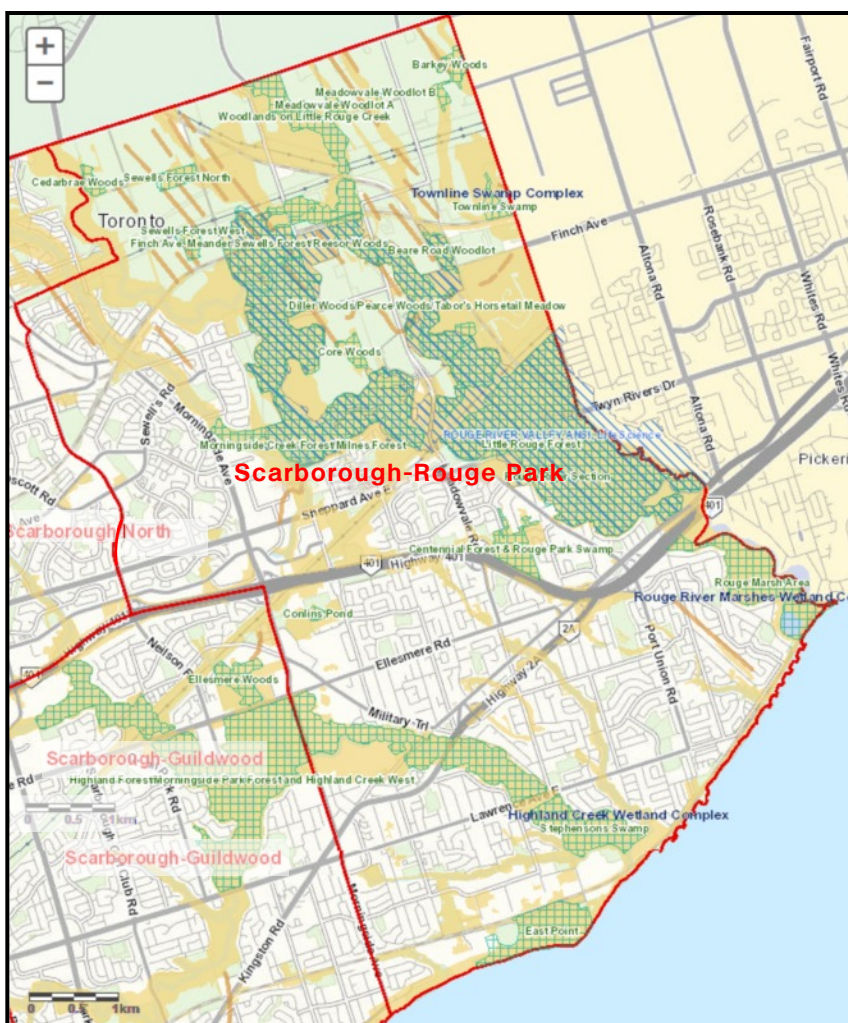
Natural Heritage System: habitats that diverse plants and animals need to live and thrive (e.g. meadows and forests that support pollinators, birds and mammals); this includes lands with the potential to be restored to natural habitat and become more interconnected.



Environmentally Significant Areas: ESAs are special spaces within Toronto's natural heritage system that support the greatest richness of plant and animal life and are most in need of protection. Some of these also have provincial ANSI (Area of Natural and Scientific Interest) designation.



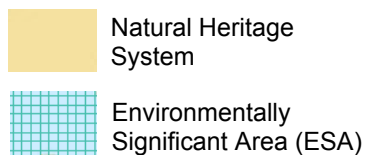
These are the designated natural areas in Ward 25: Scarborough-Rouge Park



Ward 25 includes 3 provincially significant wetlands (Rouge River Marshes, Highland Creek, Townline Swamp), 2 Earth Science ANSIs (Little Rouge Creek and Rouge River Section), and 1 Life Science ANSI (Rouge River Valley), 8 additional ESAs including Stephensons Swamp and East Point 15 ESAs; half of Ward is ANSI

Natural heritage protection includes:

- Official Plan and zoning
- Ravine and Natural Feature Protection Bylaw and Parks Bylaw
- Toronto Ravine Strategy
- Pollinator Protection Strategy
- Biodiversity Strategy (draft)
- Provincial Policy Statement 2014



SOURCE: City of Toronto, Toronto Maps v2

For more information and links to key City documents, visit ProtectNatureTO.org